

Governor Dashboard (2013)

St Joseph's College

LA: Stoke-on-Trent

DFE: 8615901

Date produced: October 2013

Version 1

The Governor Dashboard has been produced by FFT, working in partnership with the National Governors' Association and the Wellcome Trust. The dashboard will help school governors to hold schools to account, support and challenge the leadership team and make more informed strategic decisions.

The dashboard can be used to answer **six key questions:**

1. How does attainment and pupil progress compare to the national average?
2. How are we performing in different subjects?
3. Do we have any under-performing pupils?
4. How might the context of our school affect our performance?
5. How does pupil attendance compare to the national average?
6. What are the strengths and weaknesses of our school?

Guidance for governors

Gauges: underneath the gauges we indicate whether results and progress are in line with the national average, or significantly above or below the national average.

Strengths & Weaknesses: these are relative to your school and calculated using Value Added Average Point Score over 3 years (minimum 5 pupils in a group).

Statistical significance: green stars (★) and red circles (●) highlight where pupil progress is significantly above or below the national average.

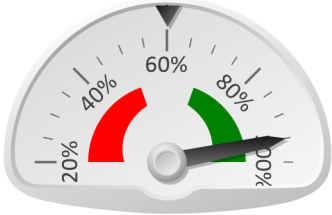
Small pupil cohorts: for small pupil cohorts we will suppress the actual data with a diamond (◆). Where it is not possible to calculate a figure or if data is not available this will be shown by a dash (-).

Data sources: the governor dashboard is generated using data from FFTLive which includes data sourced from the DFE (National Pupil Database) and data calculated by FFT. The headline performance indicators will be consistent with RAISEonline and the DFE School Performance Tables and data.

Further support materials for governors, including a brief training guide can be downloaded from the FFT website at www.fft.org.uk

Pupil Results - Attainment (2013)

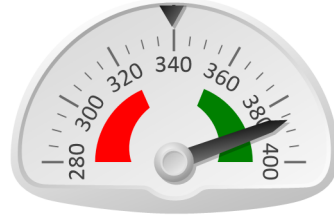
% 5+ A*-C incl Eng & Maths



95%

Results are significantly above the national average (60%)

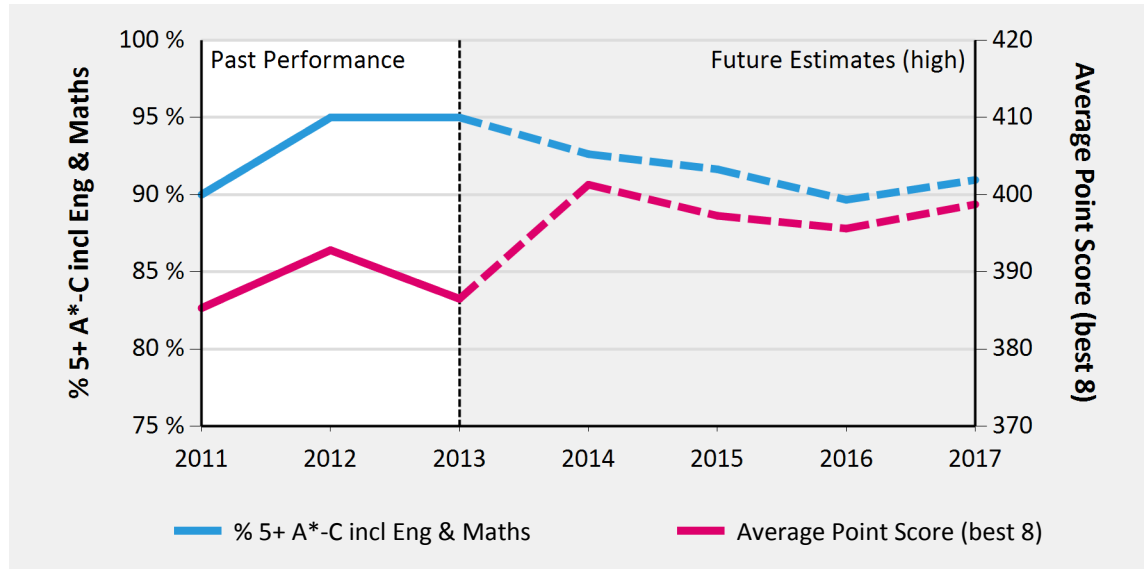
Average Point Score (best 8)



387

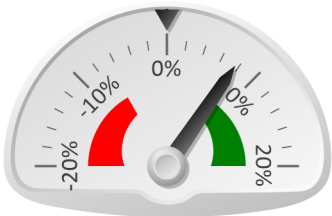
Results are significantly above the national average (339)

Key Stage 4 Headline Performance



Pupil Progress - Achievement (2013)

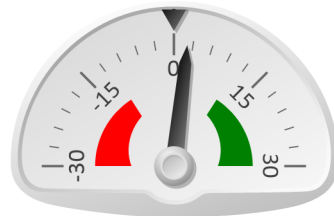
% 5+ A*-C incl Eng & Maths



8%

Progress is significantly above the national average of zero

Average Point Score (best 8)



2

Progress is in line with the national average of zero

Key Stage 4 Performance Summary

	Actual Results			Pupil Progress (Act vs Est)		
	2011	2012	2013	2011	2012	2013
Number of Pupils	126	131	122	-	-	-
% 5+ A*-C incl Eng & Maths	★ 90%	★ 95%	★ 95%	3%	★ 7%	★ 8%
Average Point Score (best 8)	★ 385	★ 393	★ 387	0	0	2
Average Grade (GCSE only)	★ B+	★ B+	★ B+	★ 0.4	★ 0.3	★ 0.4
% pupils achieving 5+ A*-A	★ 44%	★ 39%	★ 40%	★ 11%	0%	★ 7%
% 3 Levels Progress - English	★ 91%	★ 91%	★ 90%	6%	7%	6%
% 3 Levels Progress - Maths	★ 83%	★ 84%	★ 93%	0%	-3%	6%

Relative Strengths and Weaknesses (3 years)

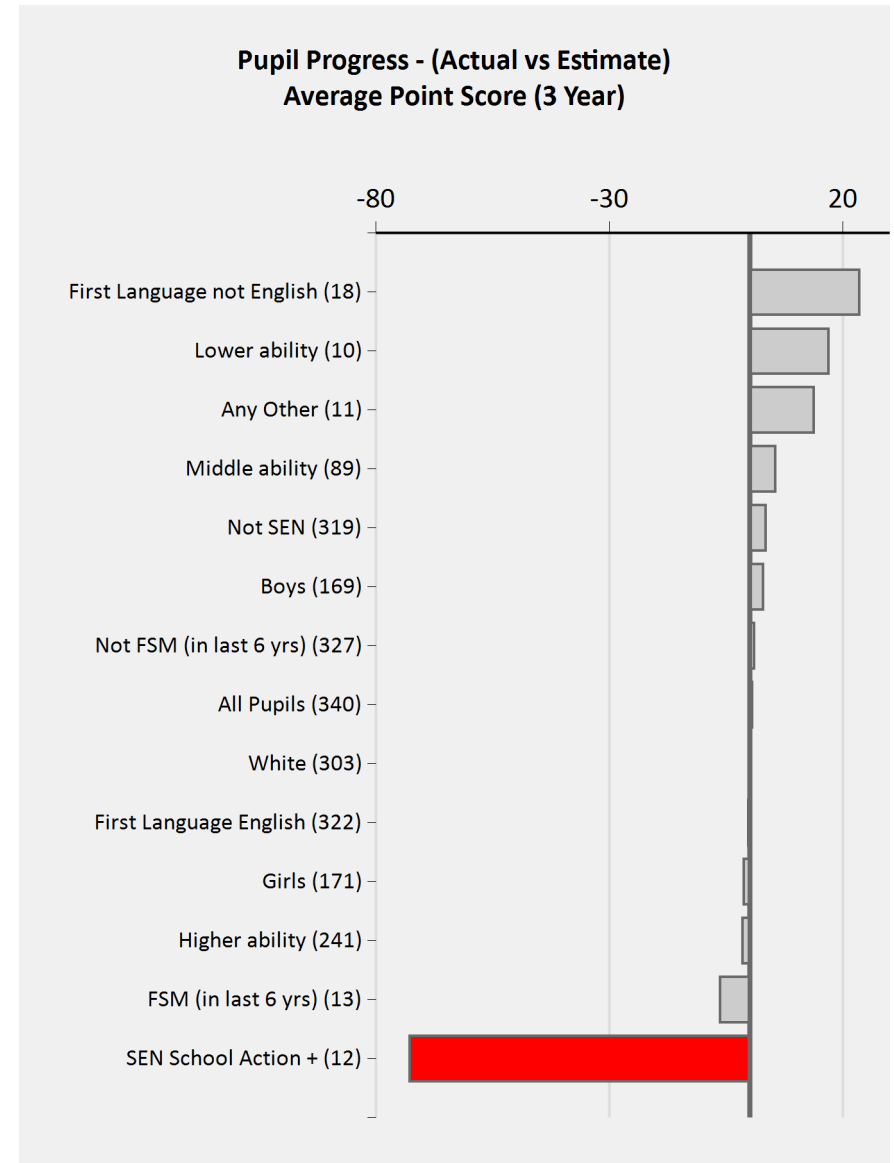
	Stronger Areas	Weaker Areas
Pupil Groups	First Language not English Middle ability Not SEN	Higher ability Girls First Language English
Subjects	D&T Textiles Technology Performing Arts Home Economics: Food	Mathematics English Literature Physical Education/Sports St

St Joseph's College (2013)

GCSE subject performance (2013)

	Pupils	Actual Results			Pupil Progress (Act vs Est)					
		Average Grade	%A*-A	%A*-C	Average Grade	%A*-A	%A*-C			
Art&Des : Fine Art	29	B+	52%	97%	0.4	★	14%	8%		
Biology	67	A	82%	100%	★	0.7	★	30%	5%	
Chemistry	67	A	73%	100%	★	0.5	★	20%	6%	
D&T Product Design	21	B+	24%	100%	★	0.8	-1%	★	23%	
D&T Textiles Tech.	13	A+	92%	100%	★	1.4	★	52%	19%	
English Language	121	B	28%	98%	0.1	-4%	6%			
English Literature	120	B	23%	97%	0.1	●	-10%	★	8%	
French	54	B+	39%	91%	★	0.6	9%	★	13%	
Geography	30	A-	53%	100%	★	0.7	★	17%	★	15%
HE: Food	17	A-	65%	100%	★	1.2	★	41%	20%	
History	60	A-	55%	95%	★	0.6	★	11%	9%	
Mathematics	122	B+	36%	99%	0.1	-3%	★	8%		
Performing Arts	15	B+	40%	100%	★	1.2	16%	★	30%	
Physics	67	A	67%	100%	★	0.4	★	16%	5%	
Religious Studies	120	B	38%	90%	★	0.3	2%	★	9%	
Science (Core)	55	B-	11%	100%	★	0.4	0%	★	27%	
Science: Additional	23	B	43%	96%	★	0.6	★	19%	13%	
Spanish	67	B+	36%	93%	★	0.7	9%	★	19%	
Sport/P.E. Studies	14	B	29%	100%	0.4	4%	17%			

Pupil groups - achievement over 3 years



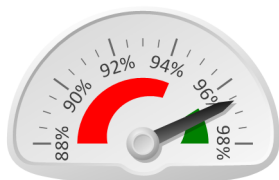
Pupil Context (Year 11, 2013)

		Pupils	School	National
Summary	All Pupils	122	100%	100%
	Girls	61	50%	49%
	Boys	61	50%	51%
Prior Attainment	Higher ability	75	61%	32%
	Middle ability	34	28%	35%
	Lower ability	1	1%	33%
SEN	SEN School Action	5	4%	11%
	SEN School Action +	3	2%	6%
	Not SEN	114	93%	79%
Free School Meals	FSM (in last 6 yrs)	1	1%	26%
	Not FSM (in last 6 yrs)	121	99%	74%
Ethnicity	White	108	89%	80%
	Indian	2	2%	2%
	Pakistani	2	2%	3%
	Other Asian	2	2%	2%
	Any Other	3	2%	3%
	No Information	3	2%	1%
First Language	First Language not English	7	6%	12%
	First Language English	115	94%	88%

School Absence (Year 7 to Year 11, 2013)

		Pupils	Absence		Persistent Absentees	
			School	National	School	National
Summary	All Pupils	654	4%	6%	2%	7%
	Girls	341	4%	6%	2%	8%
	Boys	313	4%	6%	2%	7%
Prior Attainment	Higher ability	423	4%	4%	2%	3%
	Middle ability	179	5%	6%	2%	6%
	Lower ability	16	5%	8%	0%	13%
SEN	SEN School Action	36	5%	7%	0%	11%
	SEN School Action +	9	10%	10%	22%	18%
	SEN Statement	1	◆	8%	◆	13%
	Not SEN	608	4%	5%	2%	6%
Free School Meals	FSM (in last 6 yrs)	18	5%	8%	11%	14%
	Not FSM (in last 6 yrs)	636	4%	5%	2%	5%
Ethnicity	White	560	4%	6%	2%	8%
	Indian	12	5%	4%	0%	3%
	Pakistani	15	3%	5%	0%	5%
	Other Asian	21	3%	5%	0%	4%
	Any Other	25	5%	5%	4%	6%
	No Information	12	4%	6%	0%	9%
First Language	First Language not English	59	4%	5%	2%	5%
	First Language English	595	4%	6%	2%	8%

Year 7 Attendance



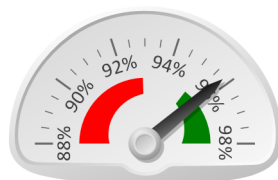
96.6%

Year 8 Attendance



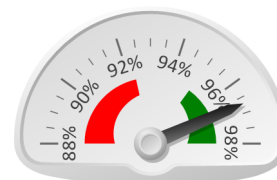
95.6%

Year 9 Attendance



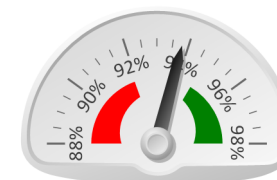
95.8%

Year 10 Attendance



96.7%

Year 11 Attendance



93.8%